

Kessler Scholars Collaborative Evaluation Plan Brief

Ithaca S+R is leading the multi-site and multi-level evaluation and assessment of the Kessler Scholars Program across the entire network and at each of the 16 participating institutions. This includes data collection, analysis, reporting, and capacity building activities; and a formative assessment to support implementation, maximize impact, and assess short-term outcomes.



Evaluation Objectives

- Assess programmatic supports and measure implementation fidelity
- Capture student experiences and assess short-term student progress
- Produce internal and external reports to inform programmatic improvement and the broader field



Research Questions

- **Reach** – Who are Kessler Scholars, and how do they compare to the broader student population?
- **Implementation** – What are the key program features across institutions, and which institutional characteristics and contexts are most related to strong model fidelity and student experiences and outcomes?
- **Effectiveness** – How effective is the Collaborative at supporting participating institutions?
- **Impact** – How does participation in the Kessler Scholars program impact student outcomes and experiences?
- **Improvement** – What are the challenges to continued growth / expansion and how can the Collaborative overcome them?



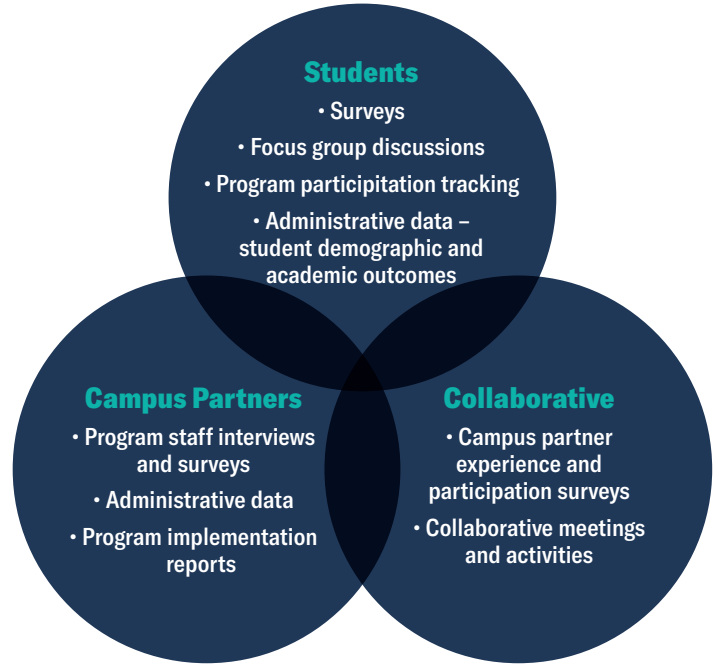
Main Evaluation Audience

- Kessler Scholars Collaborative and its 16 campus partners
- The wider higher education practitioner community



Data Collection, Analysis, and Reporting Goals

- Ethical, culturally-responsive, and equitable data collection and analysis from students, institutions, and the Collaborative, using appropriate quantitative and qualitative research methods
- Timely communication of actionable insights at the institution and Collaborative levels to inform ongoing implementation and future planning
- Dissemination of key findings and best practices to relevant audiences, including program funders and the broader higher education community



Evaluation Activities and Timelines (2022-23)

	SUMMER 2022	FALL 2022	SPRING 2023	SUMMER 2023
Inaugural campus partners	<ul style="list-style-type: none"> • Evaluation planning and introductory meeting with Ithaka S+R • Data sharing agreement and IRB approval 	<ul style="list-style-type: none"> • Program implementation and student participation tracker • Administrative student-level data collection • First-year student survey 	<ul style="list-style-type: none"> • Student focus groups • Annual staff survey • Annual (all) student survey 	<ul style="list-style-type: none"> • 2022-23 Evaluation Report • Evaluation planning for 2023-2024
New campus partners	<ul style="list-style-type: none"> • Data sharing agreement and IRB approval 	<ul style="list-style-type: none"> • Program planning tracker: Program goals and activities, student recruitment plan, staffing plan • Evaluation planning: Introductory meetings with Ithaka S+R 		

KESSLER
SCHOLARS
COLLABORATIVE

Funded by the Judy and Fred Wilpon Family Foundation and Bloomberg Philanthropies, the **Kessler Scholars Program** is a comprehensive, cohort-based program designed to support first-generation, limited-income college students through a combination of financial aid and robust, evidence-informed support programming, with the goals of advancing outcomes and closing equity gaps for participants.



Ithaka S+R provides research and strategic guidance to help the academic and cultural communities serve the public good and navigate economic, demographic, and technological change. Ithaka S+R is part of ITHAKA, a not-for-profit with a mission to improve access to knowledge and education for people around the world. We believe education is key to the wellbeing of individuals and society, and we work to make it more effective and affordable. **Project staff:** Ifeatu Oliobi, Researcher; Lia Lumauig, Analyst; and Emily Schwartz, Senior Program Manager. For more information, please contact ifeatu.olioibi@ithaka.org.